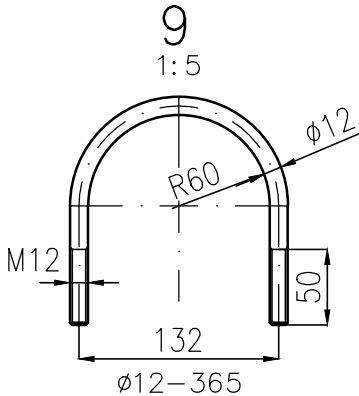
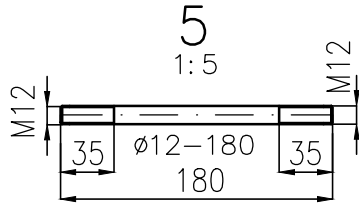
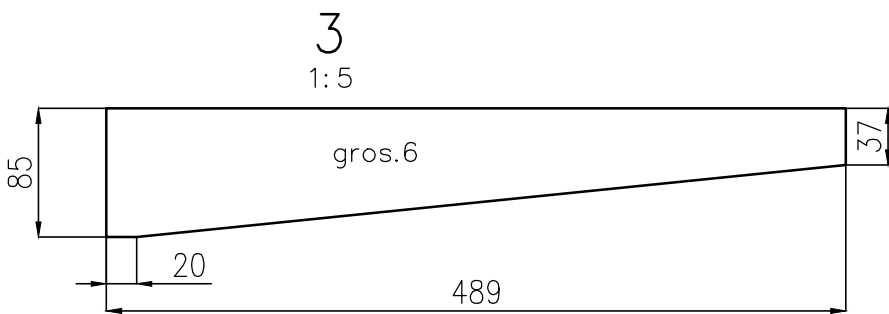
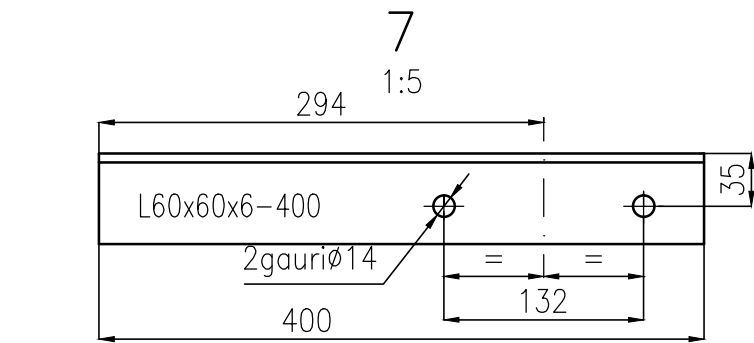
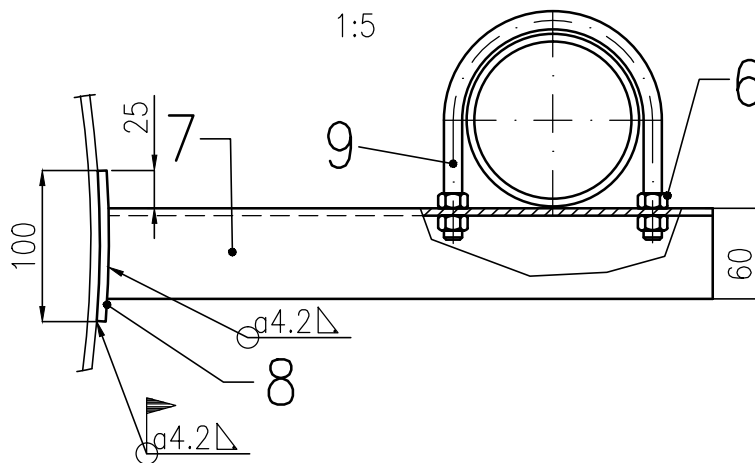
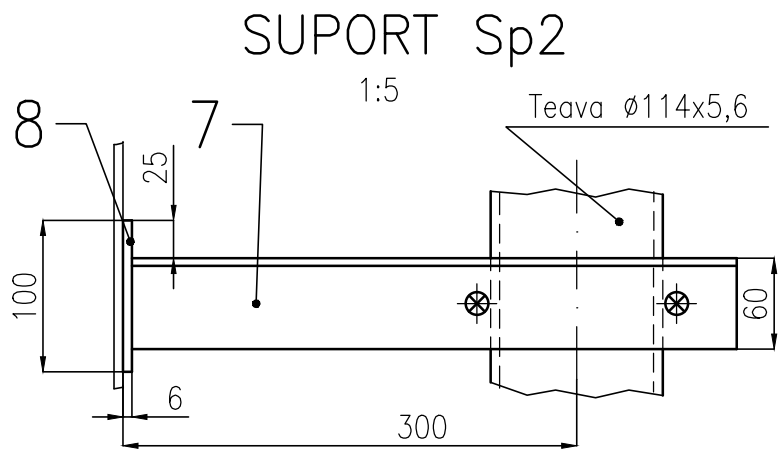
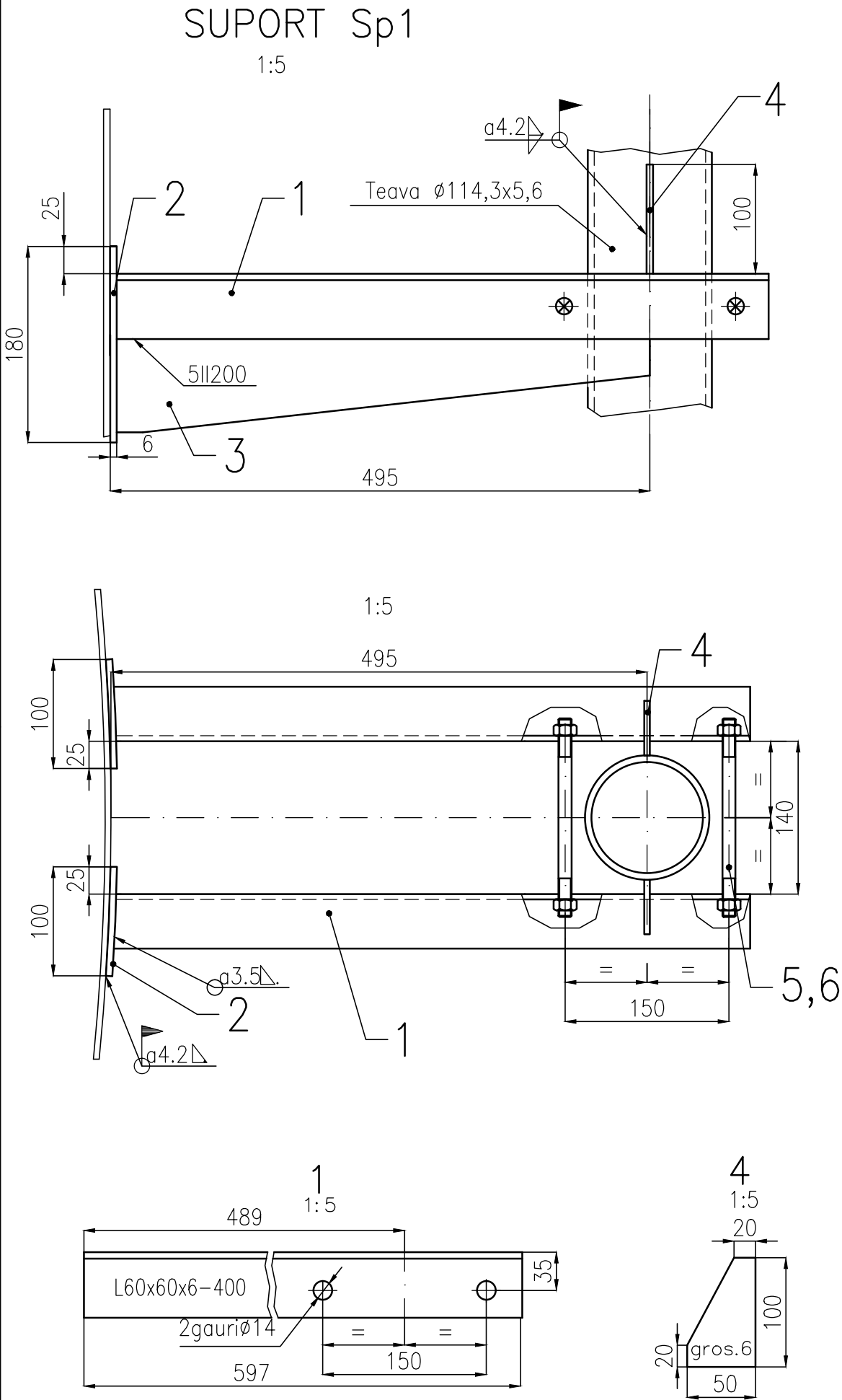


ACEST DOCUMENT ESTE PROPRIETATEA SOCIETATII ELLIS'92 S.R.L.-PLOESTI. IN CONSECINTA, FIRMA ARE DREPTUL EXCLUSIV DE FOLOSIRE A DESENULUI SAU DE OPERARE A EVENTUALELOR MODIFICARI DIN CAMPIUL ACESTUIA.



NOTA

- Cantitatile sunt determinate pentru un singur rezervor;
- Pentru ambele rezervoare lista din desen se va dubla.

6	Piulita M12	SR EN ISO 4032:2013	4	gr.5		0.02
9	Bratara (DN100)	SR EN 10025/2:2004	1	R-043	ø12-365	0.35
8	Placa 2	SR EN 10025/2:2004	1	S235JR	6x100x100	0.5
7	Consola 2	SR EN 10025/2:2004	1	S235JR	L60x60x6-400	2.2
	Electrozi	SR EN ISO 2560:2010		E 35 2 B		0.1
SUPORT Sp2 -6 buc Masa/buc 3.25 kg						
6	Piuita M12	SR EN ISO 4032:2013	4	gr.5		0.02
5	Tirant M12	SR EN 10025/2:2004	2	S235JR	ø14-180	0.3
4	Guseu	SR EN 10025/2:2004	2	S235JR	6x50x100	0.3
3	Nervura	SR EN 10025/2:2004	2	S235JR	6x85x489	2.0
2	Placa 1	SR EN 10025/2:2004	2	S235JR	6x100x180	0.8
1	Consola 1	SR EN 10025/2:2004	2	S235JR	L60x60x6-597	3.25
	Electrozi	SR EN ISO 2560:2010		E 35 2 B		0.3
SUPORT Sp1 -2 buc Masa/buc 13.4 kg						
Poz.	DENUMIREA	Nr.DESEN sau STAS	BUC.	MATERIAL	OBS.	Masa kg/buc
3			6			
2			6			
1			4			
Rev.	Descriere	Data	Semnat	Rev.	Descriere	Data Semnat
Acest document este proprietatea S.C. ELLIS'92 S.R.L. si nu va fi comunicat fara autorizare						
Intocmit	Verificat	Aprobat	Beneficiar		Denumire proiect	
R.Nita	A.Ionescu	A.Ionescu	CONPET S.A.		CONSTRUCTIE REZERVOARE PENTRU TITEI (V=2.500 mc) STATIA DE POMPARE MORENI DAMBOVITA	
92 ELLIS arhitectura proiectare inginerie consultanta tehnica				SUPORTURI CONDUCTE SPUMA		Nr.:A646-PSI-01.02 Rev.0
SP AC ISO 9001 CERTIFICAT				Scara: 1: 5 DDE		Index:A646-PSI-BD Rev.0
Material:				Masa:		Data:11.2019 Plansa: 1/1